

Japan-WCO Human Resource Development Programme

Public Finance Program Customs Course



政策研究大学院大学
NATIONAL GRADUATE INSTITUTE
FOR POLICY STUDIES



Contents

1 Program Description	1
2 About GRIPS	11
3 Student Support	13
4 Admissions	15
5 Alumni	16

Address and Contact Information

Overview and Program Objectives

Since 2000, the Customs Course in the Public Finance program at GRIPS has been cultivating promising customs officials from developing countries. The primary objective of the Public Finance Program is to provide scholars with the theoretical knowledge and practical skills essential for excelling as leaders in the field of customs and taxation. The program consists of two segments: an academic segment shared by tax and customs scholars, and a practicum segment dedicated to either tax or customs, depending on the scholar's chosen stream.

Public Finance Program

Tax Course

Customs Course

Degree offered : Master of Public Finance

Academic Segment

The academic segment provides a rigorous economics-oriented education aimed at developing a broad understanding of the theoretical, empirical, and institutional aspects of customs/tax policy implementation and administration, in the context of developing countries economic and social development. The academic segment culminates in the writing of a master's thesis facilitated by a course in which students develop their thesis with the input of academic supervisors and their peers, in which they have several opportunities to present their research.

Practicum Segment

The practicum segment of the Customs Course is provided in collaboration with Japan's Customs Training Institute (CTI: WCO Regional Training Centre), the Ministry of Finance. It involves workshops and seminars by Japan Customs experts, and field trips to regional Customs. These experiences give students opportunities to enhance their learning on practical, administrative, legal, and institutional issues, thus integrating practical experience with their theoretical learning.



Outline of the Curriculum

September Program

One academic year at GRIPS is composed of four terms: fall (16 weeks), winter (8 weeks), spring (16 weeks), and summer (8 weeks). Although the formal academic term starts in October, students in the Customs Course are invited to arrive in early September, and attend supplementary classes to brush up on their basic mathematical and statistical skills, which will help them grasp the micro-foundations of economics and the basis for empirical analysis. Additionally, students participate in introductory Japanese language classes and visit the Customs Training Institute in Kashiwa.

Schedule for September-October 2024

September		
Week 1	Sep. 6	<ul style="list-style-type: none"> ●Arrival in Japan
Week 2		<ul style="list-style-type: none"> ●Welcome party sponsored by WCO ●Japanese language class ●Mathematics for Economics
Week 3-4		<ul style="list-style-type: none"> ●Japanese language class ●Mathematics for Economics ●Courtesy visit to the Director-General of the Customs and Tariff Bureau at the Ministry of Finance, Japan ●Visit to Customs Training Institute in Kashiwa
October		
Week 5	Oct. 1 Oct. 2-3 Oct. 4 Oct. 7	<ul style="list-style-type: none"> ●Move into student residence ●Entrance ceremony, school-wide orientation ●Administrative formalities at GRIPS ●Health check-up ●Fall term classes commence



Formal Academic Program

The formal academic segment of the master's program begins in October. It starts with focused teaching of foundational skills in micro - and macroeconomics as well as quantitative analysis. It then moves to a range of applied topics which help students understand how to design, implement, and evaluate public policies - customs policy in particular - in accordance with development strategies. Topics include public finance, international economics, development economics, human resource management, customs laws, and tax laws. See the list of course offerings and the flow chart for the 2024-2025 on the following pages.

In addition to the required and strongly recommended elective courses, students can choose freely throughout the year from any of the extensive list of courses offered at GRIPS. Along with economics courses, GRIPS also offers numerous courses in various academic areas that are conducted in English. These range from public administration, political science, international relations, mathematical science, data science, and social engineering, to a diverse range of interdisciplinary fields. Students can also choose to enroll in the Japanese language courses offered throughout the year at various levels of proficiency, although credits earned in these courses cannot count towards the degree.

Practicum Program

Practicum segment comprises Practicum in Customs Administration (PCA) I, II, III and Intellectual Property Rights (IPR) Enforcement at the Border as required courses and Multilateral Trading System and Customs Administration (MTS & CA) as an elective. Among these, PCA I to III are interrelated and mutually complementary courses, whereby PCA I focus on the WTO and Customs-related trade rules, PCA II focus on the standards and good practices developed in the WCO and PCA III provide necessary knowledge of Customs reform and modernization building on the preceding courses and focus on how international rules and norms are being implemented in Japan Customs. MTS & CA will be focusing on how the multilateral trading system based on the GATT and the WTO evolved over the years and its implications on Customs administration. The segment begins in October with PCA I and subsequent courses will involve on-site visits to regional Customs in collaboration with the instructors at the CTI.

Master's Thesis

Each scholar is required to produce a policy paper as their master's thesis, focusing on a topic related to public finance customs administration with an emphasis on policy discussion. As part of this process, scholars must enroll in the "Thesis seminar," which is a mandatory course providing personal instruction in a supportive environment. During the seminar, scholars receive guidance from a faculty advisor and have multiple opportunities to present both their ongoing and completed research papers. Additionally, scholars are expected to participate in courses offered by the GRIPS Center for Professional Communication, which focus on enhancing their academic writing skills.



Academic Year 2024-2025 Curriculum Master's Programs

	Course No.	Course Name	Term	Credit	
I Required Courses	PFP5110E	Practicum in Customs Administration I	Fall	2	
	PFP5120E	Practicum in Customs Administration II	Winter through Spring	2	
	PFP5130E	Practicum in Customs Administration III	Winter through Spring	4	
	PFP5210E	Intellectual Property Rights Enforcement at the Border	Spring (Session I)	2	
	ECO1000EB	Microeconomics I	Fall (Session I)	2	
	ECO3100E	Public Finance	Winter	2	
	ECO4130E	Tutorial (PF)	Fall	1	
	GEN5020E	The World and the SDGs	Fall	1	
II Highly Recommended Elective Courses	ECO1060EA	Macroeconomics I	Fall (Session I)	2	
	ECO2000EB	Microeconomics II	Fall (Session II)	2	
	ECO2020EB	Government and Market	Winter	2	
	ECO2720EB	Introduction to Applied Econometrics	Fall	2	
	ECO3110E	Fiscal Reform in Japan	Fall	2	
	ECO3130E	Economics of Tax Policy	Winter	2	
	ECO3160E	Reform of Economic Policy in Japan	Spring	2	
	ECO3400E	International Trade	Spring (Session I)	2	
	ECO3840EB	Development Economics	Winter	2	
	PAD2560E	Human Resources Management	Spring	2	
III Elective Courses	PFP2500E	Multilateral Trading System and Customs Administration	Winter through Spring	2	
	ECO1600E	Monetary Economics (Money and Banking)	Fall	2	
	ECO2060EA	Macroeconomics II	Fall (Session II)	2	
	ECO2790E	Data Science for Public Policy	Spring	2	
	ECO2760E	Applied Time Series Analysis for Macroeconomics	Winter	2	
	ECO2770E	Applied Econometrics	Winter	2	
	ECO2780E	Applied Econometrics Practice	Winter	2	
	ECO3000E	Mathematics for Economic Analysis	Fall	2	
	ECO3104E	Political Economy	Spring	2	
	ECO3200E	Economics of Law	Spring	2	
	ECO3710E	Time Series Analysis	Spring (Session I)	2	
	ECO3860E	Development History of Asia: Policy, Market and Technology	Spring	2	
	PAD2670E	Public Expenditure Management	Spring	2	
	MOR1050EA	Introduction to Data Science I	Fall(Session I)	2	
	MOR2050E	Introduction to Data Science II	Fall (Session II)	2	
		*Selected Topics in Policy Studies I - IV			
		Courses not listed in this table			
	X Others	**Courses offered by the Center for Professional Communication			

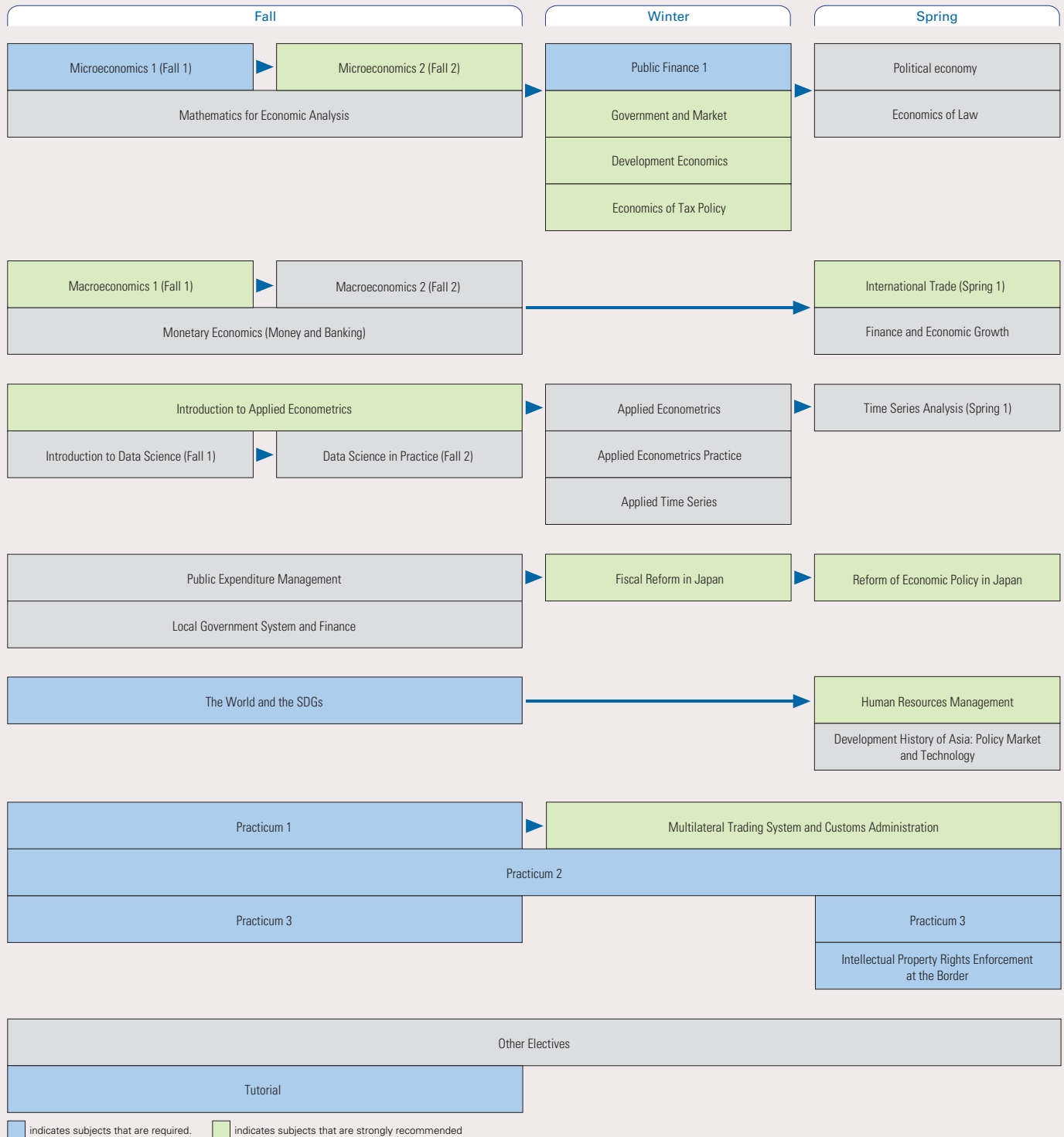
Notes:

- Graduation Requirements: Students must complete a minimum of 32 credits and meet the following requirements:
 - Tax students must complete the following courses: PFP2520E, PFP5010E, ECO1000EB, ECO3100E, ECO4130E and GEN5020E from Category I.
 - Customs students must complete the following courses: PFP5110E, PFP5120E, PFP5130E, PFP5210E, ECO1000EB, ECO3100E, ECO4130E and GEN5020E from Category I.
- Courses offered in the Program are subject to change.
- Students cannot take courses conducted in Japanese without Director's approval. If a student takes the same course in both English and Japanese, only one course (2 credits) will count toward the degree.
- *Course Number, Instructor, and Term for these courses will be announced later when the course is offered.
- **Credits earned in these courses cannot count toward the degree.
- Students must take LAN0300E, LAN0310E and LAN0320E. Students may be exempted from taking LAN0310E depending on the result of the English Placement Test and may be exempted from taking LAN0320E if they obtain the approval of their main advisor.

Degree Requirements

- The curriculum is comprised of two course categories: required courses and elective courses. In the elective courses, we have identified 11 courses that are highly recommended.
- Students in the Customs Course must complete a minimum of 32 credits, 16 of which are made up of required courses.
- Besides the minimum credit requirements stated above, students must complete and obtain approval for a master's thesis.

Flow Chart for Core and Other Major Elective Courses



Brief Core Course Descriptions (Academic Segment)

Followings are for category I and Highly Recommended Courses only. For other courses, see <http://www.grips.ac.jp/en/education/information/syllabus/>

Public Finance I

This course will provide a comprehensive understanding of how governments manage their finances and make economic decisions that impact the well-being of their citizens. Public finance explores the intricacies of government revenue, expenditure, and debt, shedding light on the complex mechanisms that shape fiscal policies. The course will also discuss the economic implications of government interventions as well as its crucial role in economic growth and welfare.

The World and the SDGs

The sustainable development goals (SDGs) adopted by the United Nations General Assembly in September 2015 present challenges that we all have to face, both globally and locally. This course, mandatory for all GRIPS students, offers an introductory overview of the state of the world in the 21st century through an examination of the historical development of the world system within the global eco-geological setting, and provides basic knowledge of the social, economic, political and ecological issues that are now being targeted by the SDGs. Throughout their participation in this course, the students are expected to think and re-think their major research focus at GRIPS within the wide perspective embodied in the SDGs.

Microeconomics I

This is an introductory course on microeconomics. It covers basic economic assumptions and concepts used to define behaviors of consumers and producers in the market. The course consists of three parts: consumer theory, producer theory and the equilibrium in a competitive market. In the consumer theory, preference, utility, budget constraints, utility maximization and demand curves will be introduced. In the producer theory, production and cost functions, profit maximization, and supply curves will be discussed. Finally, the concept and the determination of the equilibrium will be discussed.

Microeconomics II

Based on certain understanding of materials taught in Microeconomics I, this course expands the basic framework. This course covers various market structure such as monopoly, oligopoly, and monopsony using the framework of game theory. Then course also introduces several cases where the market fails to achieve efficiency and how to address those market failures.

Macroeconomics I

This is a first course in the macroeconomics sequence. The course will cover broad topics relating to major macroeconomic variables; e.g. money supply, inflation, unemployment, economic growth. Given that these variables can be changed over time and different across countries, we will use simple macroeconomic models to illustrate the underlying mechanism behind the change and difference. The focus of this course is on the long-run equilibrium.

Macroeconomics II

This is the second course in the macroeconomics sequence. It will cover broad topics, mostly related to short-run economic behavior.

Introduction to Applied Econometrics

This course helps students to understand applied econometric methods and to foster the skills needed to plan and execute their own empirical projects in economics. Topics include ordinary least squares estimation, panel data and fixed effects estimation, instrument variable estimation, difference-in-differences, and regression assessment. We study many examples and STATA package for actual estimation and application.

Government and Market

The objective of this course is to acquire an in-depth understanding of the economic roles of government in a modern market-based society. We seek to understand what governments should do (or should not do), what should be left to the market and to private individuals, and what would be the consequences of government policies. This course will help you to apply the principles and knowledge of microeconomics to current policy issues.

Fiscal Reform in Japan

The course discusses the current problems with Japan's public finance policy and the necessary reforms to address them. Japan's public finance faces several important issues such as huge government debt and rapid population aging. The course will discuss a fiscal consolidation plan, implementation of social security reform as well as medical care system and pension system.

Reform of Economic Policy in Japan

This course covers issues related to the formulation of economic policy. The main topics discussed include the current state of the Japanese economy and its weaknesses. Japan's economy has three major weaknesses: lagging in globalization, low productivity in the service sector, and inflexibility in the labor market. Knowledge of Japan's economic structural reforms towards increased productivity and labor market reform will be useful to many Asian countries which are experiencing or will experience rapid population ageing. Also, under discussion will be the role of government from the view point of economic growth.

International Trade

This course introduces the basic concepts, tools and information required for an understanding of the flow of goods across countries, i.e. international trade. We will investigate why nations trade, what they trade, and who gains from international trade. We will also analyze countries' motives for regulating international trade and the effect of regulatory policies on economic welfare.

Development Economics

This course aims to familiarize students with development problems and issues that are fundamental to developing countries.

Human Resources Management

Knowledge of Human Resource Management (HRM) has become critically important for the managers of public sector organizations. By working within a framework of academic analysis and through the practical experience of the instructor, students are expected to acquire managerial expertise and a practical sense of how public sector organizations are reformed.

Economics of Tax Policy

In this course, the students will acquire an in-depth understanding of the principles of taxation and the economics tools for analyzing tax systems and policy. In particular, students will gain hands-on experience conducting academic research using the econometric technique learned during the program. The overall goal of this course is that the students will be able to apply these principles, tools, and skills to work with current tax policy issues and fundamental policy reform options.

Political Economy

This course reviews the recent development in the literature on political economy, by introducing both theoretical and empirical studies on the frontier of the literature. The goal of the course is to develop students' ability to identify interesting and important questions in the related applied economic fields and to present these ideas effectively.

Brief Core Course Descriptions (Practicum Segment)

Practicum in Customs Administration I

This course will introduce the basic principles of the multilateral trading system (Most Favored Nation (MFN), National Treatment (NT), Free Trade Agreements (FTAs)/Customs Unions (CUs)/ Preferential Trade Arrangements (PTAs), etc.) and take up Customs-related trade rules in the context of the General Agreement on Tariffs and Trade (GATT) and the World Trade Organization (WTO), focusing on how these rules are developed in trade negotiations and its implications on the Customs administration especially as the implementing authority. Topics will include trade facilitation, bound rate of duty and tariff classification, customs valuation, e-commerce, etc.

Practicum in Customs Administration II

Knowing about policy and role of the World Customs Organization (WCO) and its tools is essential for managing Customs administration. WCO sets strategic management and four packages, namely Revenue Package, Economic Competitiveness Package (ECP), Compliance and Enforcement Package (CEP) and Organizational Development Package (ODP) as the framework of its activities. Four packages include various tools and instruments including Risk Management Compendium, Safe Framework of Standards (SAFE FOS), Authorized Economic Operator (AEO), Time Release Study and other Performance Measurement tools and others. This course provides

the background and outline of the WCO activities and its tools including how member's apply these tools effectively.

Practicum in Customs Administration III

This course aims to provide students with necessary knowledge of Customs reform and modernization, in terms of both theoretical and practical aspects, and problem-solving skills needed for strategic planning. The focus is thus placed on how a given knowledge can be applied to improve the effectiveness and efficiency of their own Customs Administrations. As generally recognized that a holistic approach is the key to successful reform and modernization, students are expected to deepen their understanding of essential components of Customs missions by referring to international standards and good practices of Japan Customs. Lectures include reviews and more practical aspects of areas which have already been taught in the Practicum in Customs Administration I and II.

Intellectual Property Rights Enforcement at the Border

Customs administrations are in the position to play a pivotal role in enforcing regulations regarding IPR infringing goods, given the fact that trade in such goods often involves cross-border transactions. IPR is one of the key issues discussed in various forums (e.g., WTO, WCO APEC, etc.), and customs administrations worldwide are expected to undertake appropriate measures. This course, consisting of classroom lectures and various field visits, aims to facilitate the students' consideration of a model of IPR border enforcement for their own customs administrations, through study of international practices of IPR border enforcement in Japan. The course also guides students towards a strong understanding of related matters such as individual IPR laws and IP rights holders' activities.

Multilateral Trading System and Customs Administration

This course will take up how the multilateral trading system based on the GATT and the WTO evolved over the years with focus on its implications on the Customs administration. The course will further elaborate on the basic principles of the multilateral trading system such as the MFN, NT, relationship between WTO and FTAs/CUs/PTAs, together with discussions on how WTO Members can use the trading system based on the WTO Agreements, including the Dispute Settlement System.



Academic Calendar for 2024-2025

Term	Month	SUN	MON	TUE	WED	THU	FRI	SAT	Note	
Fall	OCTOBER			1	2	3	4	5	Oct. 2 - 3 Entrance Guidance and Orientation	
		6	7	8	9	10	11	12	Oct. 2 - 17 Registration for Fall Term & Fall (Session I)	
		13	14	15	16	17	18	19	Oct. 7 Classes for Fall Term & Fall (Session I) begin	
		20	21	22	23	24	25	26	Oct. 18 - 24 Withdrawal for Fall Term & Fall (Session I)	
	NOVEMBER	27	28	29	30	31	1	2		
		3	4	5	6	7	8	9		
		10	11	12	13	14	15	16		
		17	18	19	20	21	22	23		
	DECEMBER	24	25	26	27	28	29	30		
		1	2	3	4	5	6	7	Dec. 2 - 16 Registration for Fall (Session II)	
		8	9	10	11	12	13	14	Dec. 3 Classes for Fall (Session II) begin	
		15	16	17	18	19	20	21	Dec. 17 - 19 Withdrawal for Fall (Session II)	
	JANUARY	22	23	24	25	26	27	28		
		29	30	31	1	2	3	4	Dec. 29 - Jan. 3 New Year holidays	
		5	6	7	8	9	10	11		
		12	13	14	15	16	17	18		
	Winter	FEBRUARY	19	20	21	22	23	24	25	[*Interterm Period: Jan. 29 - 31]
			26	27	28	*29	*30	*31	1	Jan. 30 - Feb. 12 Registration for Winter Term
			2	3	4	5	6	7	8	Feb. 3 Classes for Winter Term begin
9			10	11	12	13	14	15		
MARCH		16	17	18	19	20	21	22		
		23	24	25	26	27	28	1	Feb. 27 Grade release (Fall Term)	
		2	3	4	5	6	7	8		
		9	10	11	12	13	14	15		
Spring		APRIL	16	17	18	19	20	21	22	
			23	24	25	26	27	28	29	Mar. 19 Graduation Ceremony for domestic programs
			30	31	*1	*2	*3	4	5	[*Interterm Period: Apr. 1-3]
			6	7	8	9	10	11	12	Apr. 2 Entrance Guidance for domestic programs
		MAY	13	14	15	16	17	18	19	Apr. 2 - 15 Registration for Spring Term & Spring (Session I)
			20	21	22	23	24	25	26	Apr. 4 Classes for Spring Term & Spring (Session I) begin
			27	28	29	30	1	2	3	Apr. 16 - 22 Withdrawal for Spring Term & Spring (Session I)
			4	5	6	7	8	9	10	Apr. 25 Grade release (Winter Term)
		JUNE	11	12	13	14	15	16	17	
			18	19	20	21	22	23	24	
			25	26	27	28	29	30	31	
	1		2	3	4	5	6	7	Jun. 3 - 12 Registration for Spring (Session II)	
	JULY	8	9	10	11	12	13	14	Jun. 4 Classes for Spring (Session II) begin	
		15	16	17	18	19	20	21	Jun. 13 - 17 Withdrawal for Spring (Session II)	
		22	23	24	25	26	27	28		
		29	30	1	2	3	4	5		
	Summer	AUGUST	6	7	8	9	10	11	12	
			13	14	15	16	17	18	19	
			20	21	22	23	24	25	26	
27			28	29	*30	*31	*1	2	[*Interterm Period: Jul. 30 - Aug. 1]	
SEPTEMBER		3	4	5	6	7	8	9	Aug. 1 - 14 Registration for Summer Term	
		10	11	12	13	14	15	16	Aug. 4 Classes for Summer Term begin	
		17	18	19	20	21	22	23		
		24	25	26	27	28	29	30	Aug. 27 Grade release (Spring & Summer Terms)	
		31	1	2	3	4	5	6		
		7	8	9	10	11	12	13	Sep. 12 Graduation Ceremony	
		14	15	16	17	18	19	20		
		21	22	23	24	25	26	27		
		28	29	30						

Course Registration (Please note that schedules are subject to change.)

Registration
 Withdrawal
 No class (Sundays, National Holidays, and New Year Holidays)

2 About GRIPS

Message from the Dean

GRIPS was founded in 1997 as a stand-alone national graduate university focusing on policy studies. Future policy leaders and policy researchers from around the world gather here, making GRIPS an international hub for public policy research and education.

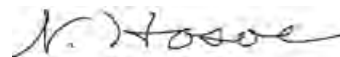
We offer Master's and Doctoral programs covering a broad range of areas, from economics, political science, public administration, and international relations to social engineering and mathematical science, and we encourage students and faculty to engage in interdisciplinary research.

GRIPS has a very international character in every respect, with more than two thirds of our students coming from overseas, from over 110 nations to date. Our faculty is also international and includes academics, public officials, and executives from private companies. The diverse backgrounds of our faculty create an ideal environment for students pursuing policy studies.

Reflecting the diverse backgrounds of our students and faculty, GRIPS aspires for cross-fertilization of academic disciplines and their application to real policy making and policy analysis. We welcome young people from all over the world to come to GRIPS to learn more about Japan and to engage in productive communication with each other. GRIPS' mission is to train and educate young, talented people to become national leaders with a genuine sense of social responsibility.

The Public Finance Program is an integral part of this mission. I hope you will join us.

Dean and Vice President
Nobuhiro Hosoe



GRIPS at a glance

The educational mandate of GRIPS is to cultivate high-level policy professionals and researchers. Our degree programs are designed to train students to envision a wide range of solutions to various policy issues.

OUR MISSION	<ul style="list-style-type: none">●Cultivate future leaders in policymaking●Serve as an international center for policy research
STUDENT LIFE	<ul style="list-style-type: none">●Numerous scholarships available●Spacious campus located in the heart of Tokyo (Roppongi)●Modern & comfortable dormitories●Global community and network (about 60 countries)●Field trips and various cultural programs offered
ACADEMIC	<ul style="list-style-type: none">●1- and 2-year master's programs●Integrated 5-year doctorate programs●Various doctorate programs●Distinguished faculty●Classes taught fully in English
FUTURE CAREERS	<ul style="list-style-type: none">●Policy-making career tracks (government official, private sector, international organizations, academia, etc.)●Active alumni for international networking

Programs offered at GRIPS for international students

For details, visit: http://www.grips.ac.jp/en/education/inter_programs/

Brief History of GRIPS

- 1977 Graduate School of Policy Science (GSPS) established at Saitama University; the predecessor of GRIPS
- 1997 National Graduate Institute for Policy Studies (GRIPS) established
- 1999 Relocated to Wakamatsu-cho campus in Tokyo (Shinjuku)
- 2005 Relocated to current campus in Roppongi



3 Student Support

One unique aspect of GRIPS is our extensive support system for assisting students in their daily living. We consider this aspect of your lives to be every bit as important as your academic life, especially for foreign scholars unfamiliar with Japan. As international students have comprised, on average, about 60% of the GRIPS student body over the last 20 years, we have developed comprehensive services to assist students in their day-to-day living.

The Student Office organizes orientation programs for incoming students and assists arriving international students in getting organized and settled in Japan. It also organizes a number of social events and activities, including field trips and concerts. The Student Office also functions as a hub to promote meaningful interaction and understanding between Japanese and foreign nationals.

Faculty

GRIPS boasts a nearly 200-member faculty from a variety of backgrounds. Many of them hold doctorate degree from outside of Japan, and many have served as central and local government officials, diplomats, bankers or business executives. This enables an effective combination of rigorous academic courses complemented by professional expertise and experience.

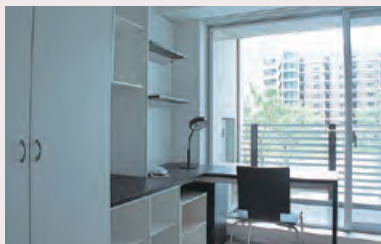
For more on our faculty members, please see <http://www.grips.ac.jp/en/about/directory/>

Accommodation

Accommodation is provided in the Tokyo International Exchange Center (TIEC), operated by the Japan Student Services Organization (JASSO), in GRIPS International House, or in private apartments recommended by the GRIPS Student Office.

TIEC Residence Halls

In the bayside area, built in 2001 by the Ministry of Education, Culture, Sports, Science and Technology (MEXT)
Room Types: Single, Couple, Family



GRIPS International House I

In Nakano, built in 2009
Room Types: Single, Couple



GRIPS International House II

In Nakano, built in 2009
Room Types: Single, Couple



Resources

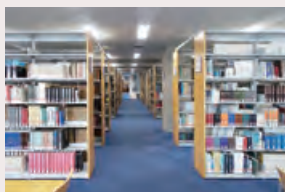
Center for Professional Communication

The mission of the Center for Professional Communication is to support GRIPS students, faculty, and staff in developing effective professional communication skills and competencies needed to communicate productively in an environment of multiple stakeholders. To this end, we offer a range of instruction and support in fundamental areas of professional communication in English and Japanese, including policy paper writing, professional speaking, grant proposal writing, and digital communications. We also provide opportunities for cultural and academic exchanges through a self-access learning center, organize seminars and special events related to all aspects of professional communication, and prepare customized materials for students and staff on academic and professional writing and language learning.



Library

- Extensive collection of publications in the field of policy studies, collected from around the world
- Collection contains over 190,000 volumes, including reference books, statistical collections, working papers, and government documents
- Large collections of periodicals that include more than 12,000 journals, many of which are available online
- Well-trained staff are equipped to respond to research-related requests



Center for Data Science

CDS is conveniently located in room C505 on the 5th floor at the end of the corridor that opens onto lecture rooms A-H. The main missions of CDS are: (1) To provide follow-up on data science-related classes; (2) To provide consultations for students and researchers who use data science in their research; (3) To provide training sessions in the use of software for data science, including R language and Stata, and in the mathematics necessary for a sufficiently deep understanding of the theoretical aspects of data science; (4) To promote joint research relating to data science within and outside GRIPS; and to hold related symposiums; and (5) To develop GRIPS's data archives.



Facilities

Student Rooms and IT Support Center

- Each student is provided with a study space, accessible 24 hours a day
- A computer help desk is open to all students during regular working hours



Health Services Center

- In-house health clinic
- Nurse on duty daily, doctor available several days a week
- Provides medical advice, basic medical examinations
- Will refer to an appropriate hospital or specialist when necessary



Gym

- Running machines and training equipment
- Showers and washing machines
- Free use by students, faculty, and staff



Photo : Masao Nishikawa.

Tea Ceremony room

Prayer room

4 Admissions

Each year, the Secretary General of the WCO invites nominations from a selected number of WCO member customs administrations, encouraging their promising young officials to apply for the program. If selected, these officials would receive full funding from the WCO.



Eligibility Criteria

Before you apply for GRIPS, please carefully read the full description of eligibility criteria on the Public Finance Program web page at http://www.grips.ac.jp/en/education/inter_programs/finance/. Details of WCO scholarships are also available on that page.

Irrespective of the funding source, to be eligible for admission to the Public Finance Program (Customs Course), the applicant must meet the following criteria:

1. Have a bachelor's degree or its equivalent from a recognized, accredited university of the highest standard.
2. Be proficient in English (admission priority will be given to applicants who have a TOEFL iBT score of 79 or higher, or an IELTS Academic score of 6.0 or higher).
3. Be an active government official in a developing country, with at least 2 years of work experience in customs policy and administration in the home country at the time of enrollment. Ideally be below 35 years of age as of April 1st in the year of enrollment. Preference will be given to those who demonstrate potential for continuing their career in customs policy and administration upon returning to their home countries.

For Those Seeking a WCO Scholarship

Those seeking a WCO scholarship must first apply for admission to GRIPS. GRIPS will make a short list of candidates and send it to the WCO for the final selection.

How to Apply

Additional Criteria for WCO Scholarship	Scholarship Coverage
<ul style="list-style-type: none">● Be a national of an eligible developing country member of the WCO● Be chosen and nominated by their Customs Administration● Have never before been awarded a scholarship under the Japan-WCO Human Resource Development Programme	<ul style="list-style-type: none">● Monthly stipend: JPY147,000.● Application fee, admission fee, and tuition● An economy-class air ticket from your home country to Japan upon enrollment at GRIPS and an economy-class air ticket from Japan to your home country upon completion of your studies at GRIPS● Book allowance: JPY75,000● Arrival allowance: JPY25,000● Return allowance: JPY25,000
For full description, please refer to the Public Finance Program web page at http://www.grips.ac.jp/en/education/inter_programs/finance/	

We accept applications for the Public Finance Program (Customs Course) online at the GRIPS website. For details, please refer to the Admissions web page at <http://www.grips.ac.jp/en/admissions/index/>

5 Alumni

One of the greatest resources and joys of studying at GRIPS is the diversity of the student community. The connections you make at GRIPS are a valuable part of your degree. The GRIPS Alumni Network will ensure they are lifetime bonds by keeping you in touch with fellow alumni and the school.

As a GRIPS graduate, you join an impressive network of around 5,400 alumni who are actively shaping future policies in more than 115 countries around the world. We offer a variety of ways to remain engaged with GRIPS and strengthen your ties with fellow alumni. These include alumni reunions, seminars, a searchable alumni directory and online networking opportunities utilizing social media such as Facebook and LinkedIn.

Alumni of the Public Finance Program (Customs Course)

Since its launch in 2000, two hundred thirty eight (238) students have graduated from the Public Finance Program's Customs Courses with Master's degree. This year, eleven students are expected to get a degree by the end of September 2024.

All were mid-career customs officials when admitted into the program. The majority of WCO scholars who graduate return to their home countries and pursue careers in the field of customs.



Voices of the Alumni



Rizvi Mohammad Salahuddin (Bangladesh, 2019)

Current Position: Professional Associate

Affiliation: World Customs Organization (WCO), Brussels, Belgium

The 13-month Master's program in Public Finance (Customs) at GRIPS is a unique opportunity for Customs officials from developing countries. GRIPS provides a perfect learning environment, exposing participants to ideas and viewpoints from students across the globe. This creates opportunities to interact with individuals from diverse cultures and intellectual backgrounds, which is an invaluable experience.

The Public Finance program provided me with a solid theoretical foundation in economics and development economics, along with practical knowledge and skills essential for customs work. The faculty members were proactive and always willing to answer our questions, which helped us stay motivated and engaged throughout the program. Furthermore, the staff at GRIPS were accommodating and friendly, making my time studying abroad a genuinely enriching experience.

Presently, I work at the WCO Secretariat as a Professional Associate. The knowledge and experience I gained during my time at GRIPS have been instrumental in helping me excel in my role at the WCO, as well as in my home administration.

For anyone considering applying to the Master's Program in Public Finance at GRIPS, I strongly encourage you to do so. This program is exceptionally well-designed and will equip you with the skills and knowledge necessary for a successful career as a Customs officer. It's truly a breathtaking journey toward the next stage in your career development, and I'm confident you'll find it an amazing experience.



Prince PAUNI WA YUMBA (Democratic Republic of Congo, 2013)

Position: Customs Officer at Inspector rank

Affiliation: Tariff and Rules of Origin department of the Directorate General of Customs and Excise

My studies at GRIPS gave me a full understanding of the role of customs in international trade and the international supply chain, and the conceptual understanding and technical competence needed to become a leader in the area of customs matters.

The program consisted of two segments: an academic segment, common to customs and tax students; and a practicum segment conducted separately for customs. The academic segment broadened my view of microeconomics and macroeconomics concepts, to prepare me to approach customs related topics such as: customs legislation, international trade, economic and budgetary reforms, monetary economics, economic development, customs administration (practicum), compliance, risk management, intellectual property rights (IPR), valuation, regulations, US Customs and Tariff Bureau, Japan Customs, and WCO-related.

The practical course provided us with an overview of customs law, including customs laws of Japan, and aspects of customs procedures and formalities. It also provided basic knowledge of international conventions such as the Revised Kyoto Convention, the Harmonized System Convention, and the World Trade Organization (WTO) Agreement on Customs Valuation.

In the practicum sections we interacted with Japanese customs administration at the Customs Training Institute, the IPR section of Japanese Customs; the Naha Okinawa and Yokohama customs offices, the Haneda International Airport customs office, and Japanese Customs Headquarters in Tokyo.

(*excerpt from the letter)



Nurazlaily Mohamad Retha (Malaysia, 2019)

Current position: Assistant Director of Customs,

Affiliation: Royal Malaysian Customs Department

The year 2018 stands out as the most memorable for me. In June, I received the scholarship result, and by August, just a month before my departure to Japan, I was promoted to Assistant Director of Customs. Initially, I was concerned that during my study leave, I would become disconnected from the world of Customs and struggle to stay updated on current and emerging issues. However, my worries were unfounded. The curriculum of the PF Program (Customs Course) comprised both academic and practicum segments. Crucially, the practicum segment was facilitated by Japan's CTI and the CTB of the Ministry of Finance. To be honest, I learned more about the realm of Customs during my time at GRIPS than I did in my initial 6 years of active service.

Coming from an accounting and finance background, I was initially assigned to the Audit Branch, envisioning it as where I would work for the remainder of my career. Nevertheless, GRIPS broadened my perspective. As my studies drew to a close, I found myself eager to return to my home administration, brimming with motivation to contribute to the modernization of RMCD by applying the skills and knowledge I had newly acquired. Presently, I work as a risk management officer, putting into practice the data cleaning and manipulation skills that I gained from studying Introduction to Applied Econometrics at GRIPS.

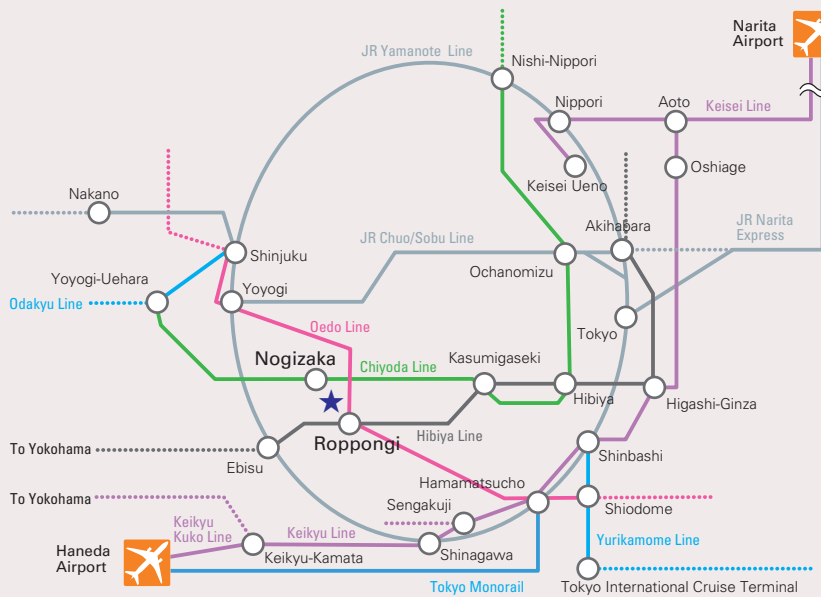
Address and Contact Information

Getting to GRIPS

The GRIPS building is located in the center of Tokyo, conveniently accessible by public transport. Both Nogizaka Station on the Chiyoda Line and Roppongi Station on the Oedo and Hibiya Lines are within 10 minutes walking distance.



Roppongi Hills



National Graduate Institute for Policy Studies

7-22-1 Roppongi, Minato-ku, Tokyo 106-8677 Japan

Tel: +81-(0)3-6439-6000 Fax: +81-(0)3-6439-6010

<http://www.grips.ac.jp>

Admissions Office

admissions@grips.ac.jp



Gateway to
Global Leadership